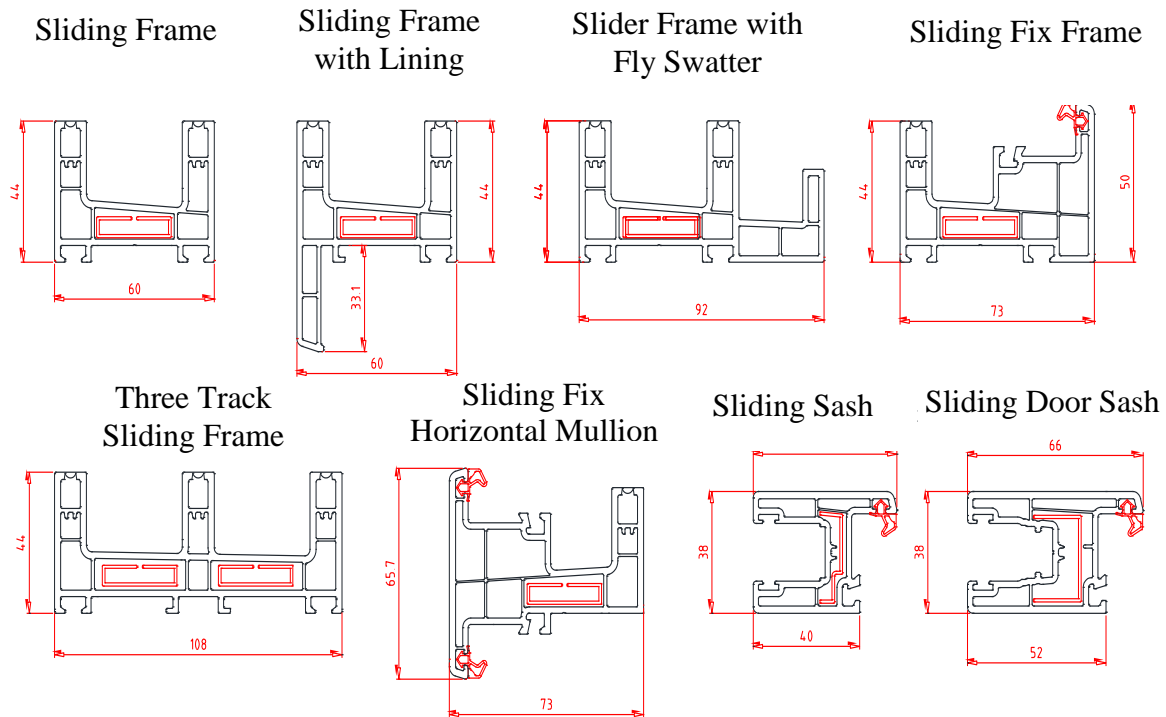


## ANDES SLIDING SYSTEM

Andes Sliding System has 60 mm frame width and 38 mm sash width. Since the sash is 38 mm wide, the system is suitable for regions where insulation is of less importance. In a similar manner, as profiles are smaller than the classical sliding system, it is not suitable for use in sliding system with greater dimensions.

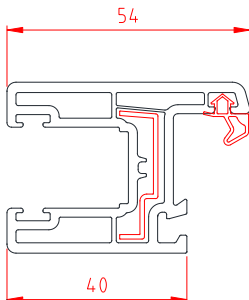
**1. Main Profiles:** The system features 5 different types of frame and 2 different types of sash profiles. Fixed glazing on the top and bottom section is available with "Sliding Fix Horizontal Mullion Profile". While "Sliding Door Sash Profile" can be used as a vertical mullion profile.



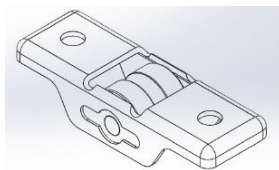
**2. Operating Principle and Sash Dimensions:** Andes Sliding system features two different sash types.

- **Sliding Small Sash Profile**

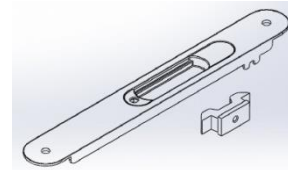
Sliding Small Sash



Sliding Small Sash Roller



Sliding Small Sash Handle

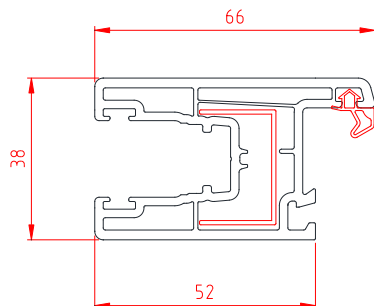


As sliding small sash profile has smaller dimensions, classic sliding espagnolette cannot be used with this system. Roller and hidden handle given above are applied. Locking system does not comprise the striker, but the latch mechanism integrated to the handle seen above. Therefore, since insulation is weak, maximum sash dimensions of 750 x 1500 mm and 600 x 1300 mm shall be adopted in single and double glazing applications, respectively.

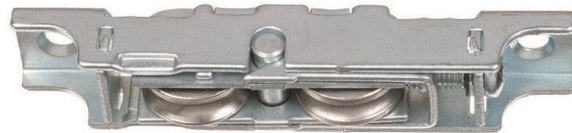
Since the handle and roller system is different from classic sliding systems, suitable accessories are supplied by us in order to avoid any misapplication.

- **Sliding Big Sash Profile**

Sliding Big Sash

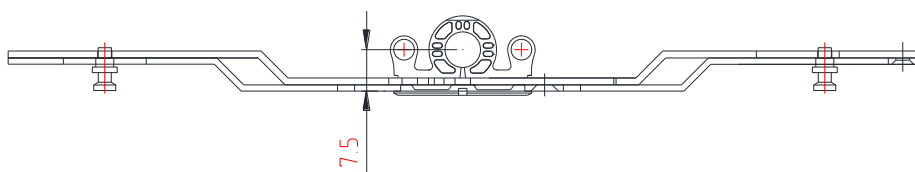


Sliding Big Sash Roller



Sliding big sash profile shall be installed with espagnolettes that have a cylinder dimension of 7.5 mm different from classic sliding ones. Otherwise, handle application may be problematic. Therefore, espagnolettes supplied by us only are recommended to be used in Andes sliding big sash.

Sliding Espagnolette



Pressure margin exerted by sash on the frame is kept in the range of 6.5 - 8 mm with the sliding door sash roller system offered. However, there are rollers of different dimensions in the market. In case larger rollers are used or pressure margin is required to be higher than the range of 6.5 - 8 mm, roller channel should be milled on the lower section on which the roller travels on.

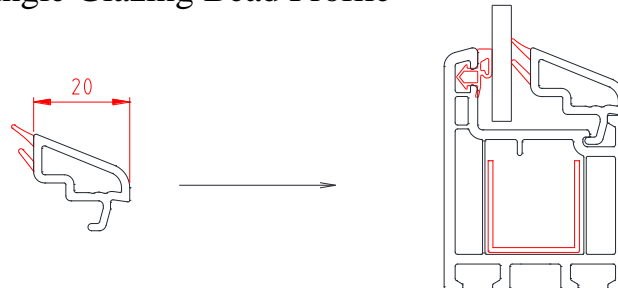
Maximum sash dimensions of 900x1800 mm and 750x1600 can be obtained in single glazing and double glazing applications, respectively, by using Sliding Big Sash profile.

### 3. Glazing Bead Profiles

Following glazing types can be used in Andes Sliding window system.

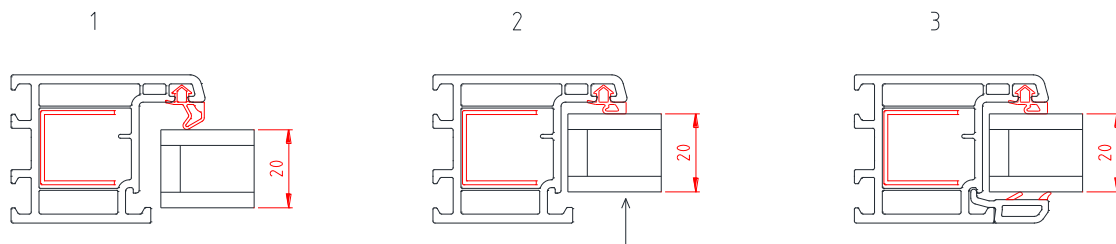
#### Single Glazing Application

Single Glazing Bead Profile



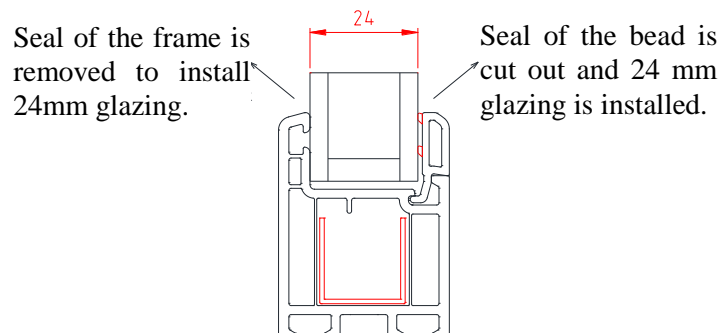
With the single glazing bead profile that the system features, it is possible to carry out single glazing applications.

#### Double Glazing Application



Since the system has 38 mm profile width, in case 20 mm wide glazing application is carried out, the glazing closes up to bead groove, as shown in figure 1. The bead is installed to its position only upon pushing glazing and exerting pressure on the frame seal to open the bead channel. Therefore, use of glazing with total width of 17 mm (4+9+4) or 18.5 (4+10.5+4) with 9 or 10.5 mm interspaces respectively, is more convenient in terms of bead application. Besides, since the bead surface is small, care is necessary in case of application with the mallet.

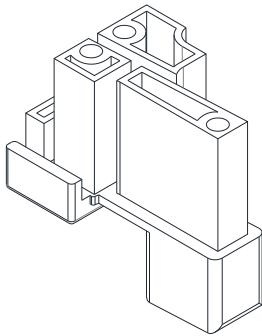
If 24 mm glazing is required, frame seal is removed and seal on the bead is partly cut out, being the only feasible way of 24 mm glazing application.



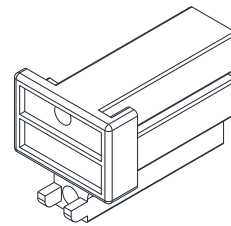
#### 4. Vertical and Horizontal Mullion Connectors

In cases where the sliding system is built as fixed to upper and lower horizontal planes in Andes Sliding system, Sliding Fix Frame profile and Sliding Fix Horizontal Mullion profile are used for application. Sliding Fix Horizontal Mullion profile is notched with mullion tool and is being connected to the frame by using the horizontal mullion connector given below. Similarly, if Sliding Fix Frame profile is required, Sliding Big Sash Profile is notched and connected to the fix frame by using the following vertical mullion connector.

Horizontal Mullion Connector



Vertical Mullion Connector



#### 5. Andes Glazing Installation to Fix Frame

When a sliding window with one moving sash and one fixed section is required, the frame profile to be used is Sliding Fix Frame Profile. Installation of fixed glazing to sliding fix frame should be done before sash installation. Also, installation of glazing to the frame should be made as shown below.

